

Model xFxFL series

Naked Bare Die (Flip chip form)

TENTATIVE

For the main stream applications

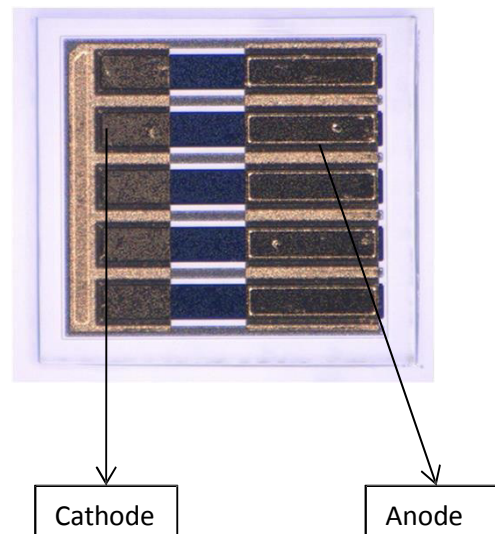
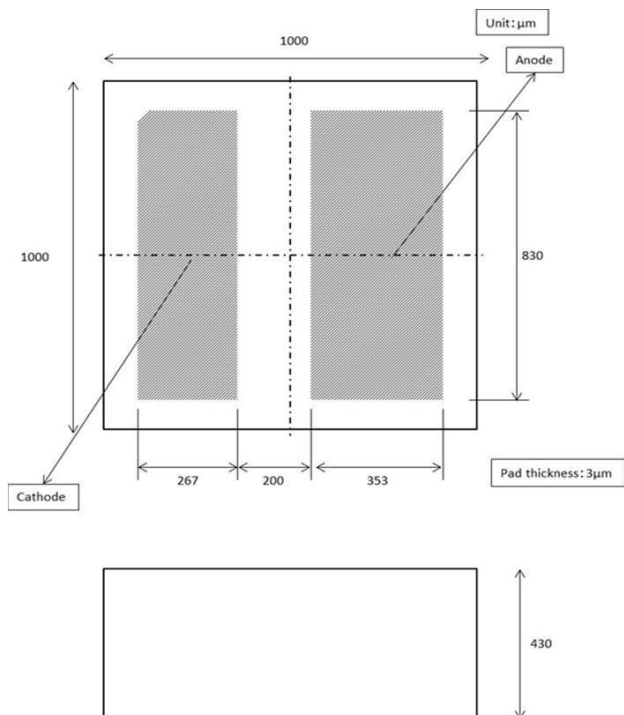
Typical Optical-Electrical Characteristics

($I_F=350\text{mA}$, $T_a=25^\circ\text{C}$)

Item	Symbol	Unit	DF8L			UF1L		
			Min	Typ	Max	Min	Typ	Max
Peak Wavelength	λ_p	nm	270	280	290	303	308	313
Radiant Flux	P_o	mW	-	35	-	-	35	-
Full Width at Half Maximum	$\Delta\lambda$	nm	-	12	-	-	14	-
Forward Voltage	V_F	V	-	5.4	-	-	5.3	-

Product ID, Physical dimensions and Sample photo

xFxLC-00001



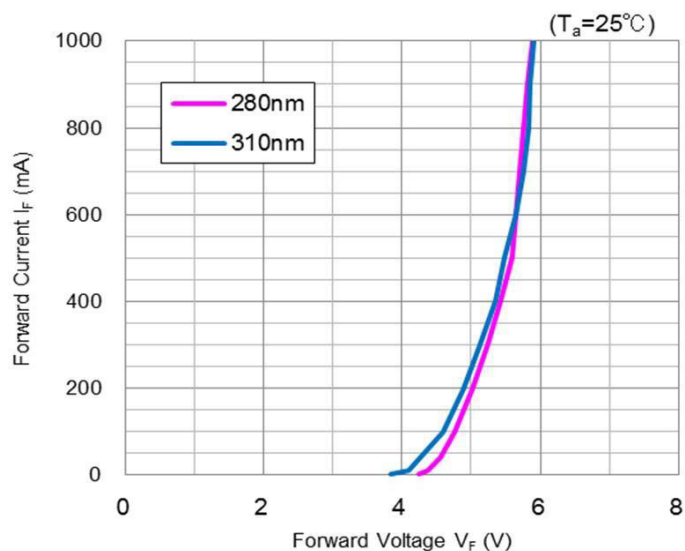
CAUTION

- LEDs emit very strong UV radiation.
- Don't look directly into the LED light.
UV radiation can harm your eyes.
- To prevent even inadequate exposure, wear protective eyewear.
- If LEDs are embedded in devices, please indicate warning labels against the UV light LED used.
- Keep out of reach of children.
- Specification and dimension are subject to change for improvement without notice.

Model xFxL series

Naked Bare Die (Flip chip form)

Forward Voltage vs Forward Current



Forward Current vs Radiant Flux

