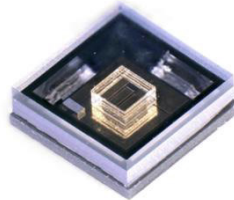


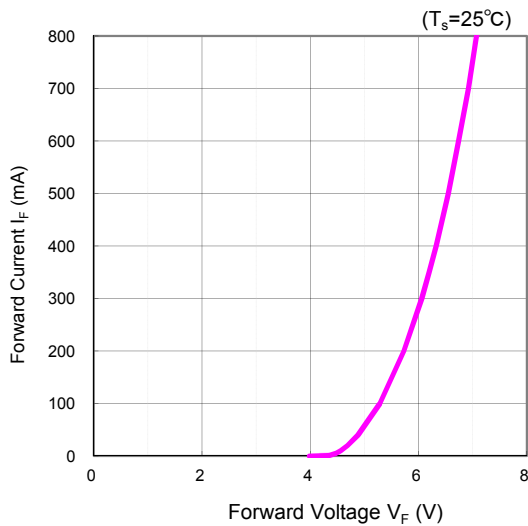
**Developing High-power SMD package  
MODEL DF8ZV-0F001  
3.5 x 3.5mm SMD Flat Top Type**



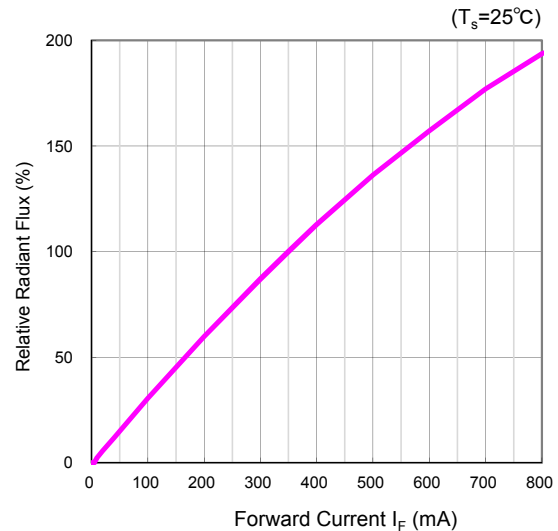
**Typical Optical-Electrical Characteristics (T<sub>s</sub>=25°C)**

| Item                       | Symbol          | Unit | DF8ZV    |           |     |          |             |     |
|----------------------------|-----------------|------|----------|-----------|-----|----------|-------------|-----|
|                            |                 |      | IF=350mA |           |     | IF=800mA |             |     |
|                            |                 |      | Min      | Typ       | Max | Min      | Typ         | Max |
| Peak Wavelength            | $\lambda_p$     | nm   | 270      | 280       | 285 | -        | (280)       | -   |
| Radiant Flux               | P <sub>o</sub>  | mW   | -        | <b>40</b> | -   | -        | <b>(75)</b> | -   |
| Full Width at Half Maximum | $\Delta\lambda$ | nm   | -        | 11        | -   | -        | (11)        | -   |
| Forward Voltage            | V <sub>F</sub>  | V    | -        | 6.1       | -   | -        | (6.9)       | -   |

**Forward Voltage vs Forward Current**



**Forward Current vs Radiant Flux**



|  |  |
|--|--|
|  | <b>WARNING</b>   |
|  | <ul style="list-style-type: none"> <li>• LEDs emit very strong UV radiation.</li> <li>• Don't look directly into the LED light.</li> <li>• UV radiation can harm your eyes.</li> <li>• To prevent even inadequate exposure, wear protective eyewear.</li> <li>• If LEDs are embedded in devices, please indicate warning labels against the UV light LED used.</li> <li>• Keep out of reach of children.</li> <li>• Specification and dimension are subject to change for improvement without notice.</li> </ul> |