

SMT435

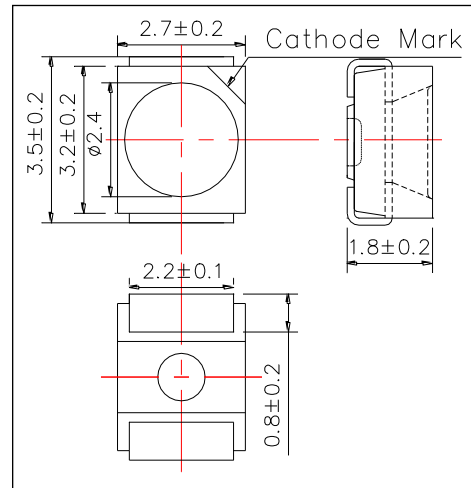
High Power Blue Color TOP LED

SMT435 consists of an InGaN LEDs mounted on the lead frame as TOP LED package
It emits a spectral band of radiation at 430nm.

<Specifications>

1. Product Name: TOP LED
2. Type Number: SMT435
3. Chip:
 - Chip Material: InGaN
 - Peak Wavelength: 430nm
4. Package
 - Lead Frame Die: Silver Plated
 - Package Resin: PPA Resin
 - Lens: Epoxy Resin

Outer Dimension (Unit:mm)



Absolute Maximum Ratings				
Item	Symbol	Maximum Rated Value	Unit	Ambient Temperature
Power Dissipation	PD	120	mW	Ta=25°C
Forward Current	IF	50	mA	Ta=25°C
Reverse Voltage	VR	5	V	Ta=25°C
Operating Temperature	TOPR	-20 ~ +80	°C	
Storage Temperature	TSTG	-30 ~ +80	°C	
Soldering Temperature*	TSOL	255	°C	

* Soldering condition must be completed within 10 second at 255°C.

Electro-Optical Characteristics [Ta=25°C]						
Item	Symbol	Condition	Minimum	Typical	Maximum	Unit
Forward Voltage	VF	IF=20mA		3.4	4.3	V
Reverse Current	IR	VR=5V			10	uA
Total Radiated Power*	PO	IF=20mA		12		mW
Radiant Intensity**	IE	IF=20mA		12		mW/sr
Brightness	IV	IF=20mA		300		Mcd
Peak Wavelength	λP	IF=20mA	425	430	440	nm
Half Width	Δλ	IF=20mA		16		nm
Viewing Half Angle	θ1/2	IF=20mA		±45		deg

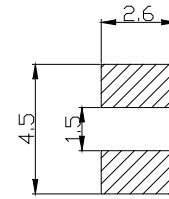
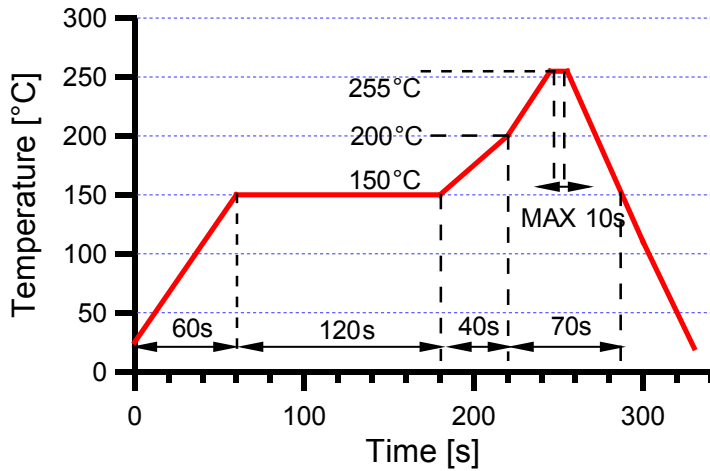
* Measured by Ando Optical Multi Meter AQ2140 & AQ2741(AQ2140 is set at 400nm range)

** Measured by Epitex designed and AQ2140 & AQ2741



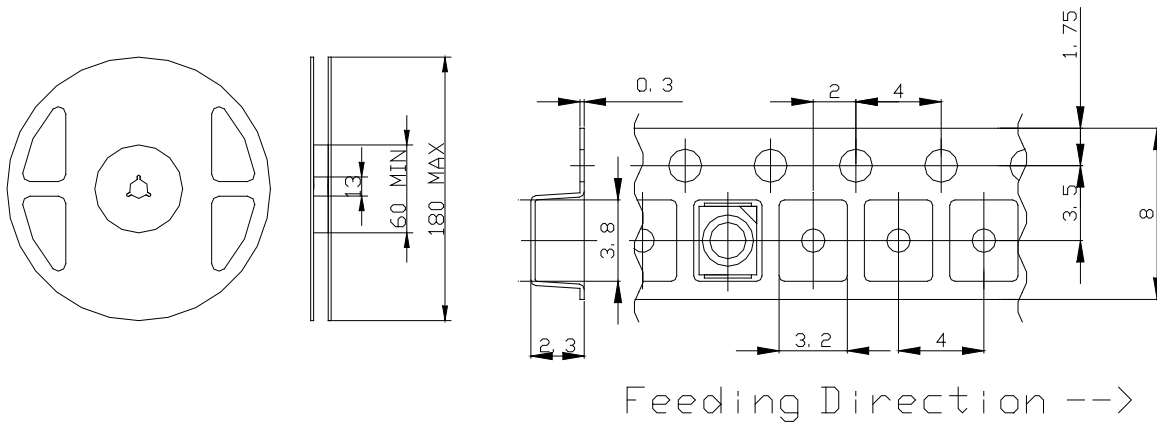
◆ SMD Application
IR-Reflow Soldering Profile for lead free soldering

Recommended Land Layout (Unit: mm)



Don't put stress on SMD and a circuit board after soldering.

◆ SMD Packing
Tape and Reel Dimensions (Unit: mm)



◆ Wrapping
Moisture barrier bag aluminum laminated film with a desiccant to keep out the moisture absorption during the transportation and storage.