

## Fully sealable Emily lenses for Cree XP-G LEDs



- Specially designed for Cree XLAMP XP-G series of LEDs.
- Lens material optical grade PMMA with high UV and temperature resistance (105°C/220°F)
- High optical efficiency, up to 90%
- No lens holder. Lens has small position pins, fastening to heat sink with a PU foam adhesive tape of automotive grade. For mounting instruction, please see datasheet at the bottom page.
- Lens foot can be potted with resin without losses in optical efficiency (**fully sealed construction** of luminaire possible)
- Diameter 26 mm, height 15mm

## LENS TYPES

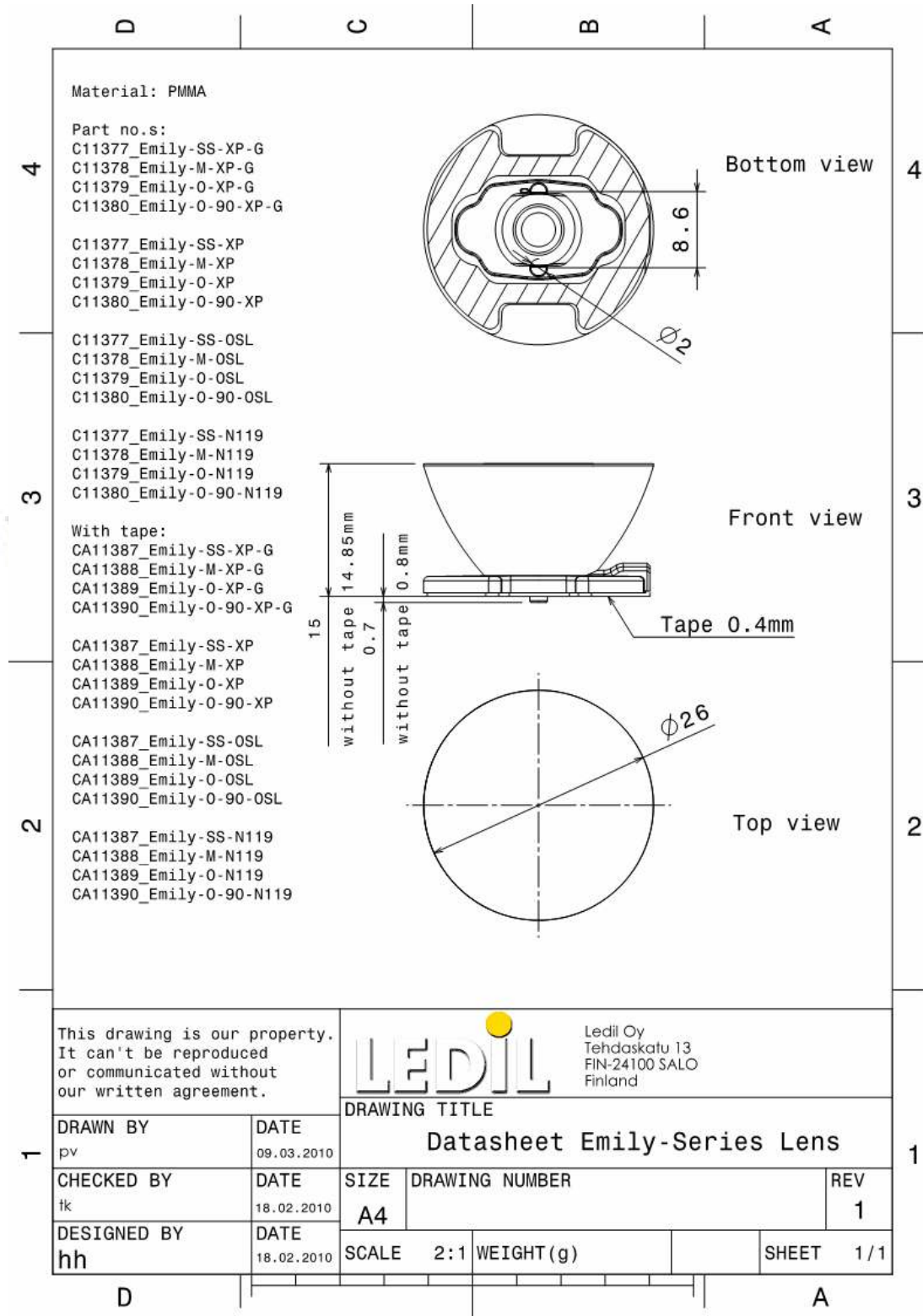
| NAME              | ORDERING CODE           | FWHM Angle  |
|-------------------|-------------------------|-------------|
| Emily Smooth Spot | CA11387_Emily-SS-XP-G   | Coming soon |
| Emily Medium      | CA11388_Emily-M-XP-G    | Coming soon |
| Emily Oval        | CA11389_Emily-O-XP-G    | Coming soon |
| Emily Oval 90°    | CA11390_Emily-O-90-XP-G | Coming soon |

## MEASUREMENTS

Coming soon

© Ledil Oy – Subject to change without prior notice

## DRAWINGS



This drawing is our property. It can't be reproduced or communicated without our written agreement.



Ledil Oy  
 Tehdaskatu 13  
 FIN-24100 SALO  
 Finland

**DRAWING TITLE**

Datasheet Emily-Series Lens

|                          |                           |
|--------------------------|---------------------------|
| <b>DRAWN BY</b><br>pv    | <b>DATE</b><br>09.03.2010 |
| <b>CHECKED BY</b><br>tk  | <b>DATE</b><br>18.02.2010 |
| <b>DESIGNED BY</b><br>hh | <b>DATE</b><br>18.02.2010 |

|                     |                       |                     |
|---------------------|-----------------------|---------------------|
| <b>SIZE</b><br>A4   | <b>DRAWING NUMBER</b> | <b>REV</b><br>1     |
| <b>SCALE</b><br>2:1 | <b>WEIGHT (g)</b>     | <b>SHEET</b><br>1/1 |