

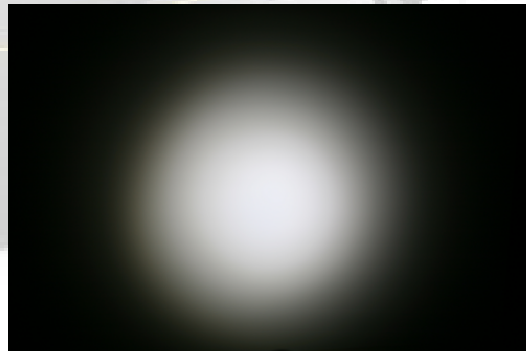
Twiddle-XR lenses for Cree XR-E LEDs



- Specially designed for Cree XR-E series of LEDs
- Special care taken to make a uniform white or warm white illumination.
- Lens material optical grade PMMA
- Integrated holder. Fastening to heat sink with a PU foam adhesive tape of automotive grade
- Compact dimensions 21.6 x 14.4 mm. Square form enables easy build of matrix without any gaps between lenses.
- New PATENT PENDING "Omni-directional" technique, allows freely swivel the lens and its light distribution in any angle within +/- 15 degrees from the nominal position

LENS TYPES

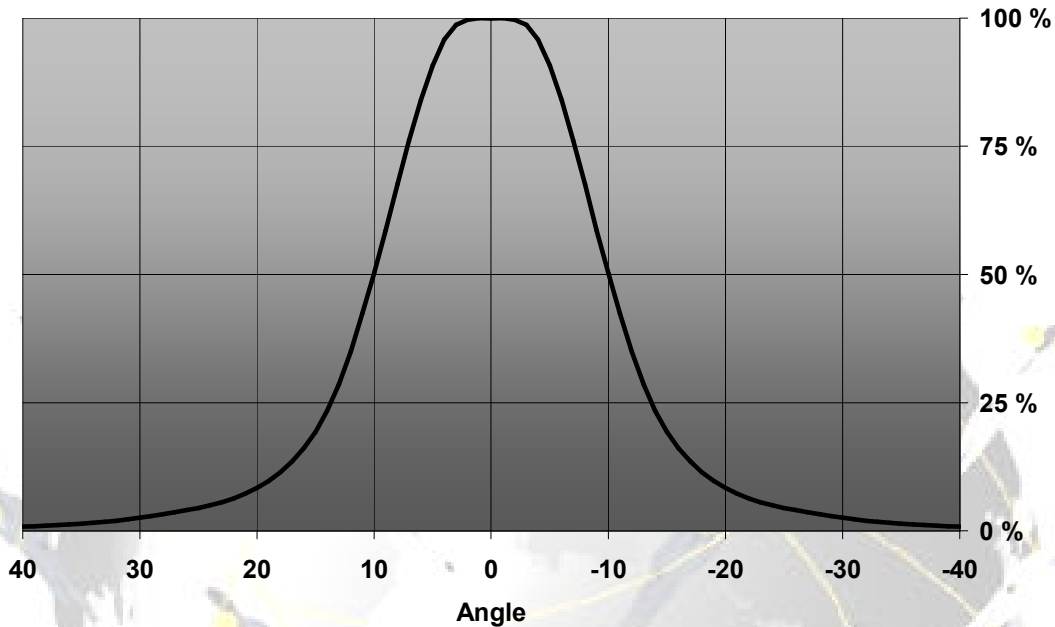
NAME	ORDERING CODE	FWHM Angle
Twiddle Diffuser	FA10737_Twiddle-XR-D	±10°
Twiddle Medium	FA10739_Twiddle-XR-M	±14°



MEASUREMENTS

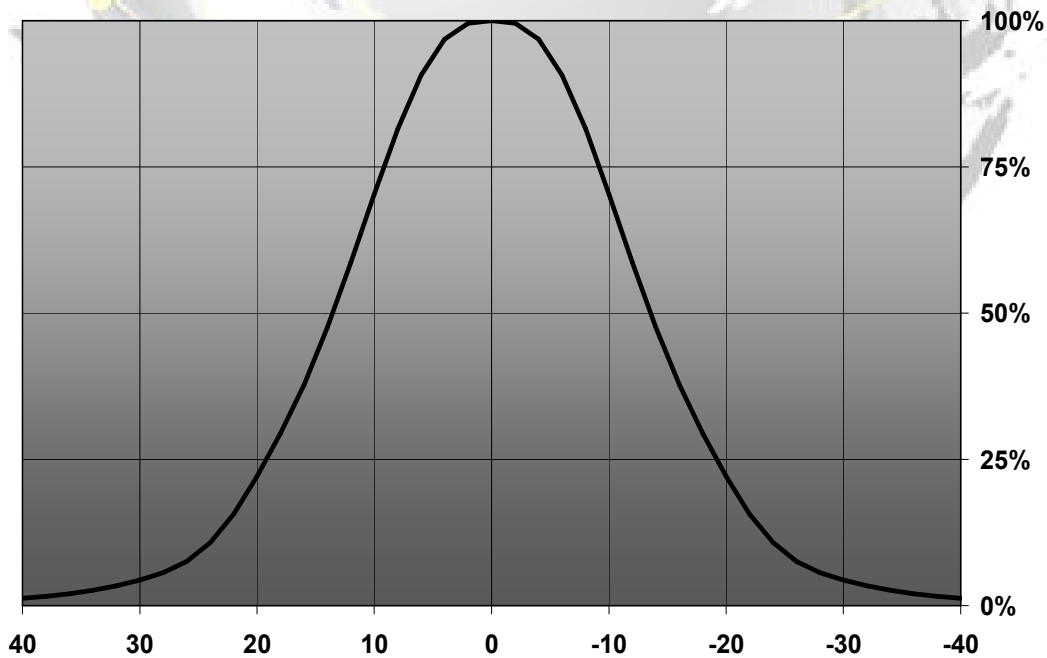
TWIDDLE-XR-D

Relative Intensity of TWIDDLE XR-E



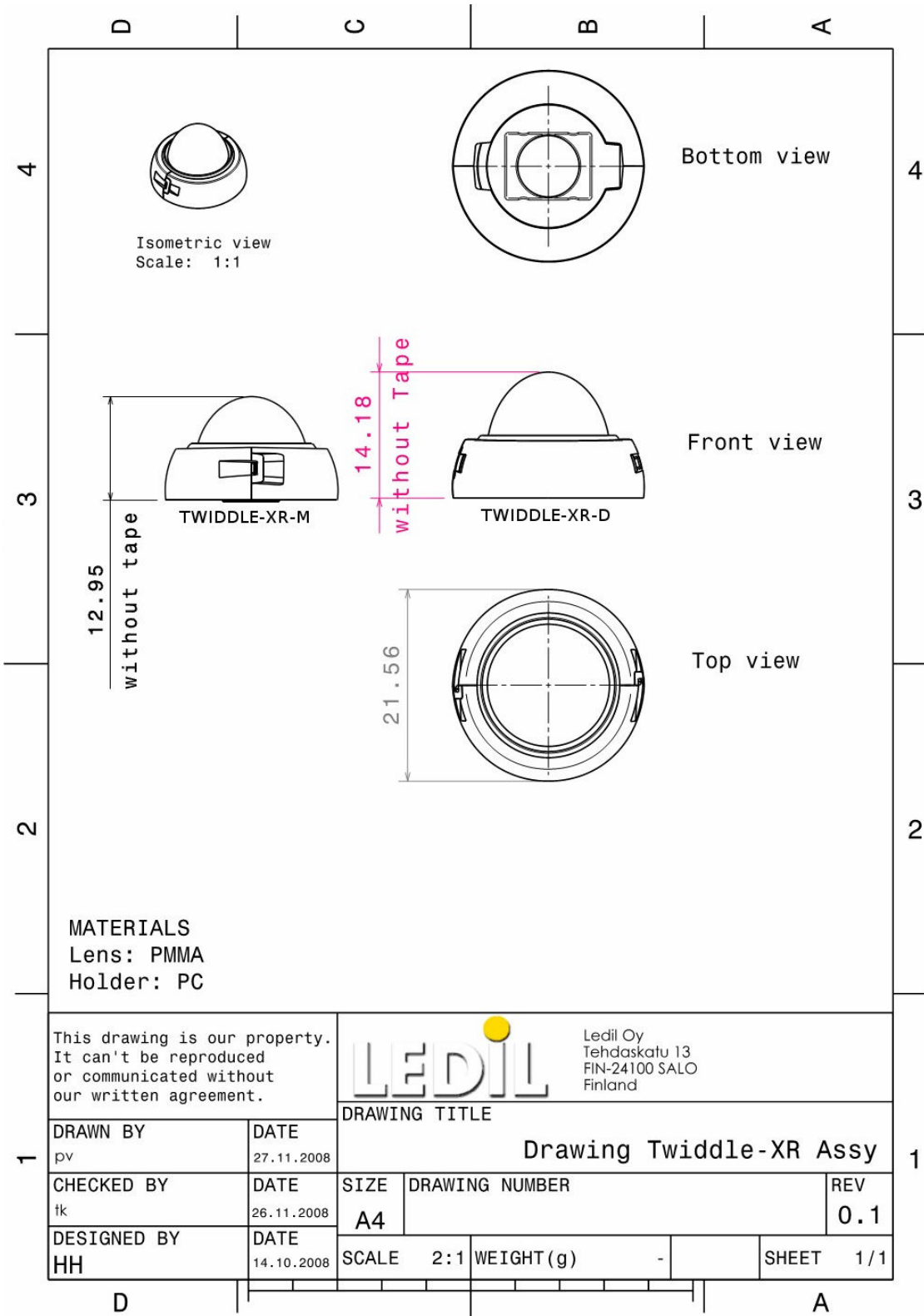
TWIDDLE-XR-M

Relative Intensity of FA10739_Twiddle-XR-M



© Ledil Oy – PRELIMINARY - Subject to change without prior notice

DIMENSIONS



© Ledil Oy – PRELIMINARY - Subject to change without prior notice